



Rxi[®]-5Sil MS Columns

Exceptionally Inert
Columns for GC/MS and
Trace-Level Analyses

- **Low bleed** at higher temperatures for better sensitivity and lower detection limits.
- **Excellent inertness** for highest acidic, basic, and polar compound response.
- Engineered to assure predictable performance and **column-to-column reproducibility**.

www.restek.com/rxi

Rxi®-5Sil MS Fused Silica Columns

Exceptionally Inert Columns for GC/MS and Trace-Level Analyses

The Rxi®-5Sil MS column is ultra-low bleed, highly inert, and unsurpassed in performance compared to other columns of similar phase. The technology used to produce these columns results in exceptional column-to-column reproducibility, ensuring every column you receive performs consistently, lot-to-lot and year-to-year. Compare the performance of the Rxi®-5Sil MS column to competitors, and see why the Rxi®-5Sil MS column is the best choice, particularly for GC/MS and trace-level analyses.

Lowest Bleed Column in the Industry

The Rxi®-5Sil MS column was developed using new polymer chemistry and a specialized cross-linking and stabilization process, creating a column with an exceptionally low bleed profile, even at high temperatures. Compared to other silarylene columns that are marketed as equivalent, the Rxi®-5Sil MS column shows substantially lower bleed levels, even at 350°C (Figure 1), and generates nearly symmetrical peaks for polar analytes and other challenging compounds.

The low bleed characteristic of the Rxi®-5Sil MS column allows for higher signal-to-noise ratios, thus allowing lower detection limits. This increased sensitivity, in combination with the column's high inertness and reliable performance, is especially beneficial to GC/MS and trace-level analyses.

Proven Inertness for Both Acidic and Basic Compounds

In addition to high temperature robustness, all Rxi® columns are designed to be exceptionally inert for acidic, basic, and polar compounds. To demonstrate this comprehensive inertness, Rxi®-5Sil MS columns are tested using both acidic and basic compounds at low concentrations. Two probes are used: pyridine, which exhibits tailing if the column contains active sites for basic compounds, and 2,4-dinitrophenol, which shows a lower response if the column contains active sites affecting acidic compounds.

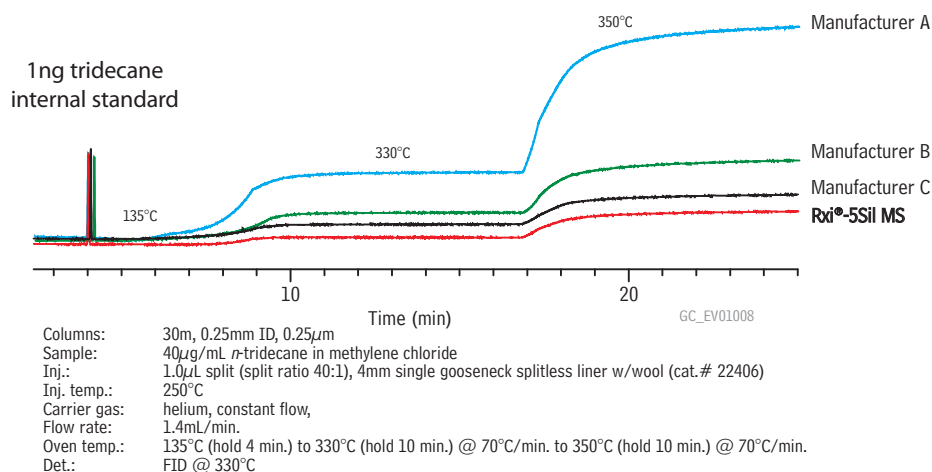
As shown in Figure 2, Rxi®-5Sil MS columns are significantly more inert to pyridine at 2 ng on-column than competitor columns A and B, as measured by tailing and peak height. Manufacturer C column inertness is similar, but the Rxi®-5Sil MS column exhibits less tailing and a higher response, as shown in Table I.

Table I Rxi®-5Sil MS columns produce high response factors for both basic and acidic compounds.

	2,4-dinitrophenol (average RF)	pyridine (average RF)
Rxi®-5Sil MS	0.24	0.74
Manufacturer A	0.20	0.63
Manufacturer B	0.22	0.64
Manufacturer C	0.24	0.65

Response factors are based on phenanthrene. (n=7)

Figure 1 Rxi®-5Sil MS columns outperform competitors, producing lower bleed at 350°C than any other column on the market.



Exceptional Reproducibility

In addition to extremely low bleed and high inertness, Rxi®-5Sil MS columns offer remarkably consistent performance. Chromatographers can be confident that each new Rxi®-5Sil MS column will perform exactly the same as the one it replaces. Precision manufacturing and tight quality controls guarantee excellent batch-to-batch reproducibility (Figure 3). In addition, all Rxi®-5Sil MS columns are individually tested using stringent specifications, to ensure consistent performance.

Conclusion

Rxi®-5Sil MS columns consistently outperform competitor columns in terms of bleed, inertness, and reproducibility. These columns are designed for lower detection limits and are ideal for GC/MS and trace-level analyses. For your next application, choose an Rxi®-5Sil MS column, the only column that reliably delivers low bleed, high inertness, and column-to-column/lot-to-lot reproducibility.

Figure 2 Rxi®-5Sil MS columns are more inert than competitor columns, allowing both acidic and basic compounds to be accurately analyzed at low levels.

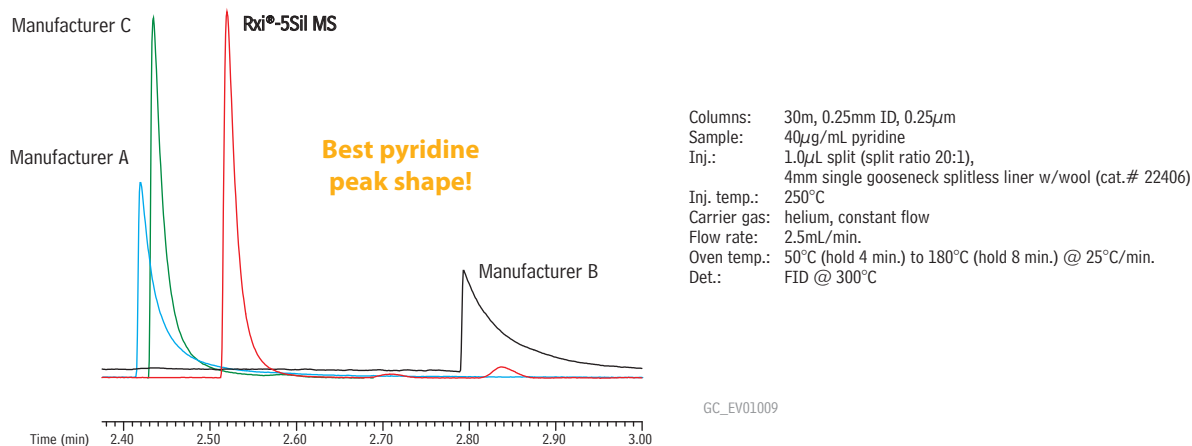
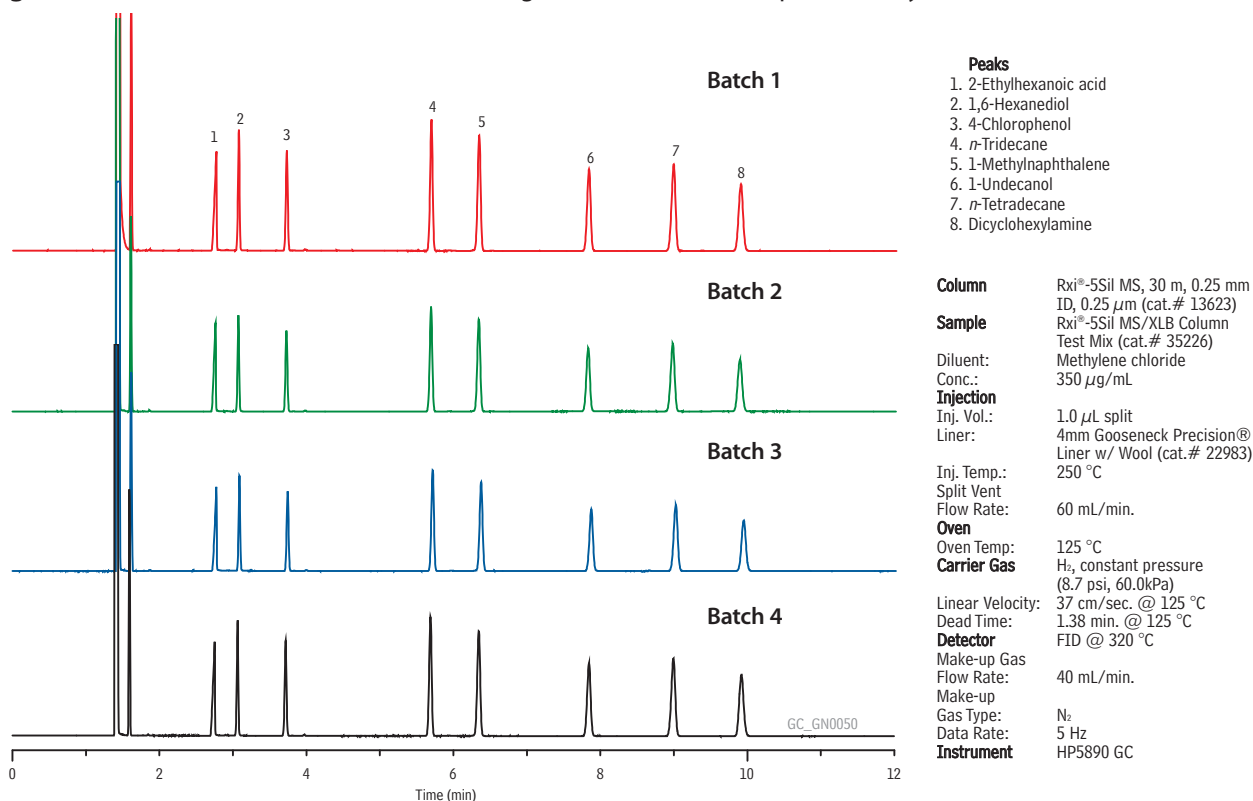
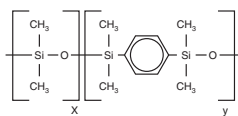


Figure 3 Rxi®-5Sil MS columns show outstanding column-to-column reproducibility.





Rxi®-5Sil MS Columns (fused silica)

(low polarity Crossbond® silarylene phase; selectivity similar to 5% phenyl/95% dimethyl polysiloxane)

- Engineered to be a low bleed GC/MS column.
- Excellent inertness for active compounds.
- General purpose columns—ideal for GC/MS analysis of polycyclic aromatic compounds, chlorinated hydrocarbons, phthalates, phenols, amines, organochlorine pesticides, organophosphorus pesticides, drugs, solvent impurities, and hydrocarbons.
- Temperature range: -60 °C to 350 °C.

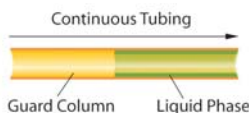
The Rxi®-5Sil MS stationary phase incorporates phenyl groups (called silarylene) in the polymer backbone. This improves thermal stability, reduces bleed, and makes the phase less prone to oxidation. Rxi®-5Sil MS columns are ideal for GC/MS applications requiring high sensitivity, including use in ion trap systems.

similar phases

DB-5ms, VF-5ms, CP-Sil 8
Low-Bleed/MS, DB-5ms UI,
Rtx-5Sil MS, ZB-5ms,
Optima 5ms, AT-5ms,
SLB-5ms, BPX-5



Integra-Guard® built-in guard column



PATENTS & TRADEMARKS

Restek patents and trademarks are the property of Restek Corporation. Other trademarks appearing in Restek literature or on its website are the property of their respective owners.

ID	df	temp. limits	15-Meter	30-Meter	60-Meter
0.25mm	0.10µm	-60 to 330/350°C	13605	13608	
	0.25µm	-60 to 330/350°C	13620	13623	13626
	0.50µm	-60 to 330/350°C	13635	13638	
	1.00µm	-60 to 325/350°C	13650	13653	13697
0.32mm	0.25µm	-60 to 330/350°C	13621	13624	
	0.50µm	-60 to 330/350°C		13639	
	1.00µm	-60 to 325/350°C		13654	
0.53mm	1.50µm	-60 to 310/330°C		13670	

ID	df	temp. limits	10-Meter	20-Meter
0.10mm	0.10µm	-60 to 330/350°C	43601	
0.15mm	0.15µm	-60 to 330/350°C	43815	43816
	2.0µm	-60 to 330/350°C		43817
	0.36µm	-60 to 330/350°C		43604

Rxi®-5Sil MS with Integra-Guard®

Description	qty.	cat.#
15m, 0.25mm ID, 0.25µm Rxi-5Sil MS w/10m Integra-Guard Column	ea.	13620-127
30m, 0.25mm ID, 0.25µm Rxi-5Sil MS w/5m Integra-Guard Column	ea.	13623-124
30m, 0.25mm ID, 0.25µm Rxi-5Sil MS w/10m Integra-Guard Column	ea.	13623-127
15m, 0.25mm ID, 0.50µm Rxi-5Sil MS w/5m Integra-Guard Column	ea.	13635-124
30m, 0.25mm ID, 0.50µm Rxi-5Sil MS w/5m Integra-Guard Column	ea.	13638-124
30m, 0.25mm ID, 0.50µm Rxi-5Sil MS w/10m Integra-Guard Column	ea.	13638-127
30m, 0.32mm ID, 0.50µm Rxi-5Sil MS w/5m Integra-Guard Column	ea.	13639-125
30m, 0.32mm ID, 1.00µm Rxi-5Sil MS w/5m Integra-Guard Column	ea.	13654-125

Rxi®-5Sil MS/XLB Column Test Mix (8 components)

4-chlorophenol	2-ethylhexanoic acid	1-methylnaphthalene	<i>n</i> -tridecane (C13)
dicyclohexylamine	1,6-hexanediol	<i>n</i> -tetradecane (C14)	1-undecanol
350µg/mL each in methylene chloride, 1mL/ampul			cat. # 35226

Visit us at www.restek.com/rxi

Introducing
Restek's most
inert liners:
Sky™ Inlet
Liners

www.restek.com/skyliners

RESTEK

Lit. Cat.# GNFL1061A

© 2011 Restek Corporation.

Restek U.S. • 110 Benner Circle • Bellefonte, PA 16823 • 814-353-1300 • 800-356-1688 • fax: 814-353-1309 • www.restek.com
 Restek France • phone: +33 (0)1 60 78 32 10 • fax: +33 (0)1 60 78 70 90 • e-mail: restek@restekfrance.fr
 Restek GmbH • phone: +49 (0)6172 2797 0 • fax: +49 (0)6172 2797 77 • e-mail: info@restekgmbh.de
 Restek Ireland • phone: +44 (0)2890 814576 • fax: +44 (0)2890 814576 • e-mail: restekurope@aol.com
 Restek Japan • phone: +81 (3)6459 0025 • fax: +81 (3)6459 0025 • e-mail: ryosei.kanaguchi@restek.com
 Thames Restek U.K. LTD • phone: +44 (0)1494 563377 • fax: +44 (0)1494 564990 • e-mail: sales@thamesrestek.co.uk

ISO 9001:2008
cert.# FM80397